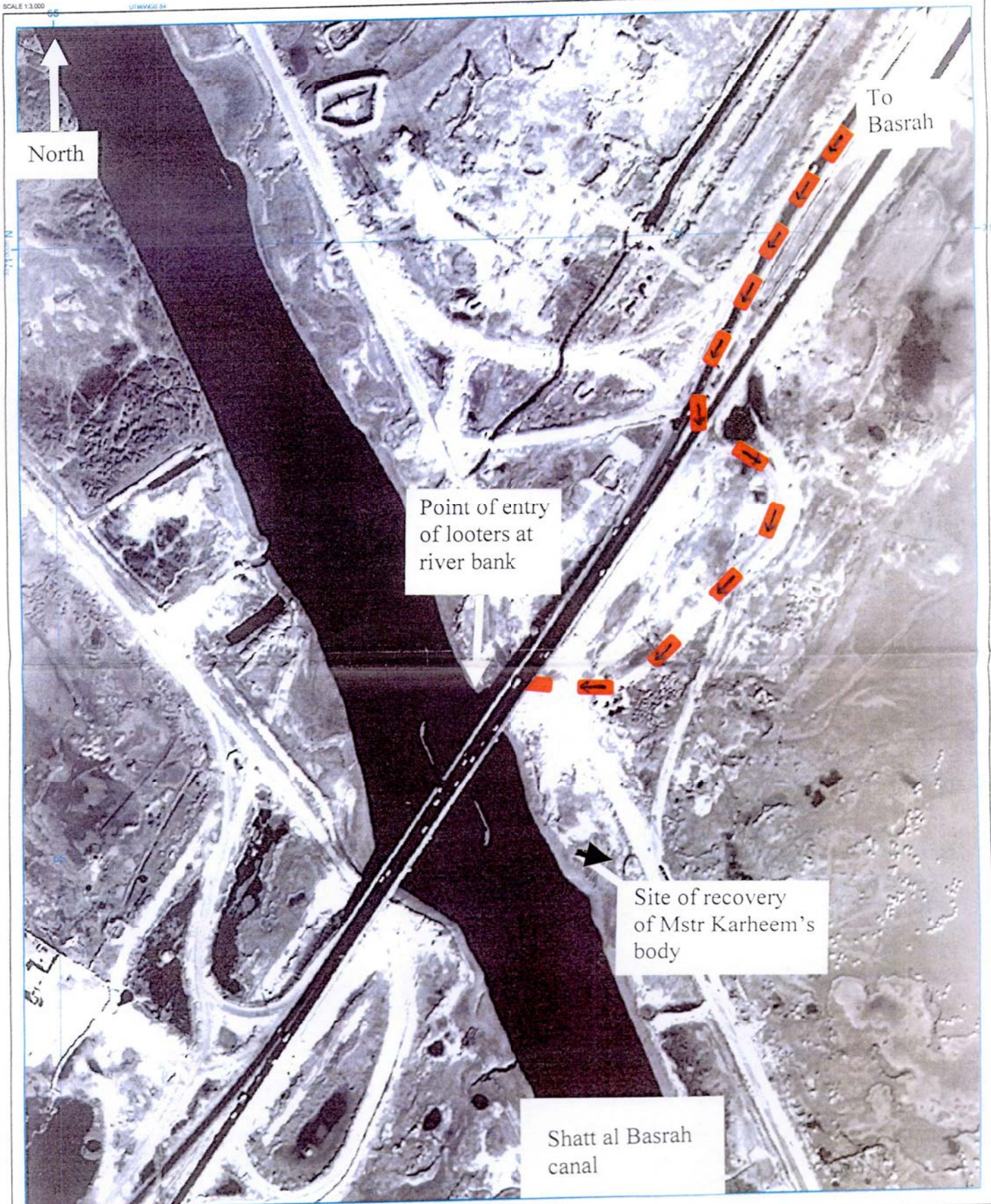
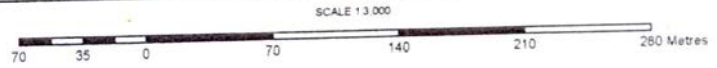



MOD-83-0000334-A

EXHIBIT CEF/1^a - SATELLITE IMAGE DEPICTING
BRIDGE 4, BASRAH. 64654/03



Produced by Geographic Support Group, HQ MND (SE).
Maps produced for and behalf of the Chief Geographic Officer, HQ MND (SE)
are not to be taken as necessarily representing the views of the UK Government
on the boundaries of political states.
Users noting errors are to mark them hereon and forward to the Chief Geographic
Officer, MND (SE).
Base image derived from Google Earth imagery.



 - ASSUMED ROUTE OF CALL SIGN '12'

QU

CEP/1a